

# Wellsite Products & Services

- *Innovative*
- *Customised*
- *Highly Portable*
- *Quick To Install*



# Who We Are

Upstream Production Solutions (Upstream P.S.) is a leading provider of products and services to the Australian and international Oil & Gas industry. With an extensive track record and enviable reputation for innovative, safe and environmentally-friendly solutions to key production challenges, Upstream P.S. is a dynamic company, client focussed and rapidly growing in its core areas of operations & maintenance, well management, packaged equipment and project management.



## DESIGN

Because we are involved through a project's whole life cycle, including operations and maintenance of facilities on behalf of our clients, we understand the high costs that can be incurred through poor design.

We provide in-house professional design service which includes process, mechanical, structural and electrical and control engineering from concept design through to execution.

Deliverables range from preliminary layout and design, to full 3D modelling and detailed design, HYSYS and other process modelling / calculations, HAZOP/HAZID studies and workshops, in addition to:

- Vessel and line sizing
- Radiation, flare and relief calculation
- Engineering reports
- Instrumentation and control

- Structural design
- 3D CAD modelling
- Plant and equipment layout and design
- Model design review

Our focus during the design phase is to ensure accurate cost estimating, schedule confidence and reliable, operable, constructable facilities.

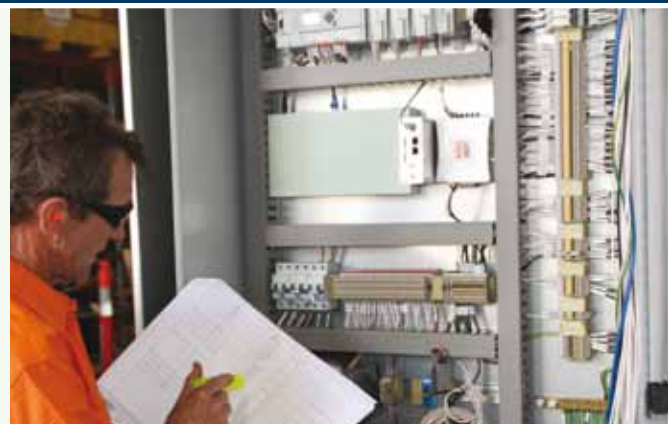
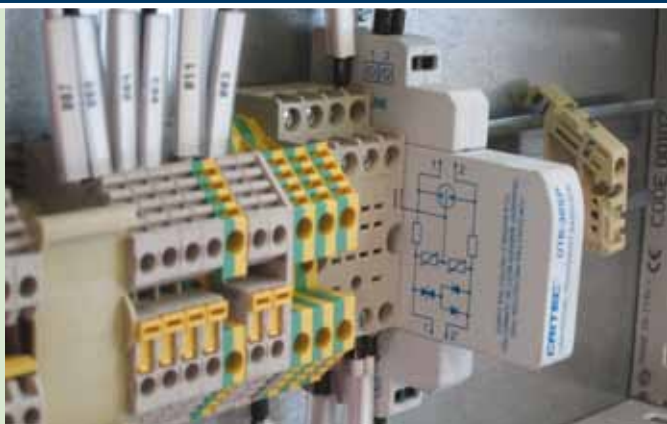


# ELECTRICAL-INSTRUMENTATION-CONTROLS-AUTOMATION

Our module mounted HMI and PLC control design is simple yet effective for remote field monitoring. Complimented by a solar powered, battery backup system and completed with robust 3G, satellite or radio communications including data logger linked to the client's main database, it provides secure monitoring of the equipment in the field.

## FEATURES

- Product Suitability
- Robust safety shutdown and protection systems
- Programming Safety Systems and Control PLC and HMI
- Manufacture of the stand-alone module, including wiring of equipment and function testing.
- Construction, wiring and testing of RTU and skid junction box panels.
- EXd certified personnel ensure all equipment and installation is compliant.
- Pre FAT and FAT execution internally and with the client.
- Installation, Commissioning and Training.



# MANUFACTURE AND CONSTRUCTION

Upstream Production Solutions specialise in the design, manufacture and installation of high pressure piping and vessels, structural steelwork and Electrical & Instrumentation control equipment, plus on-site services to the oil and gas industry. Quality is assured through our fully audited management systems and quality procedures, accredited to ISO 9001.

## FABRICATION SERVICES:

- Pressure vessel manufacture in conformance with AS1210, ASME IX
- Pressure piping – AS 4041-1998 and ASME B31.3-2008
- Structural steelwork - AS 1657, 1554
- NDT testing – AS 4037

## CUSTOMISED PRODUCTS:

- Separator skids
- Two-pipe skids
- Inter-connecting pipework
- Solar powered Remote Telemetry Units
- Elevated and pit flares
- Customised package solutions, working with client





## INSTALLATION AND COMMISSIONING

We provide the full range of expert services for the installation and commissioning of our packaged equipment. Because we operate and maintain facilities on behalf of our clients we understand the high cost incurred during construction-installation, commissioning and operations. Our focus during the design phase is to conduct a reliability, maintainability, constructability and operability study to facilitate faster site installation and “set and forget” styled operation.

- Wellsite construction
- Wellsite and facility commissioning
- Facility upgrades
- E&I, controls installation, modifications and troubleshooting
- Piping installation
- Handover to operations



## WELLSITE MAINTENANCE & MANAGEMENT

Upstream Production Solutions provide comprehensive support to asset owners at all stages of the project lifecycle – from the initial planning through to end of the asset's life.

- Leak testing
- Wellhead pump, gearboxes, couplings, motors, and VSD's
- Control valves, actuators and positioners
- PCVs
- Manual ball, gate, globe valves, double block and bleed root valves
- PSVs and bursting disks
- Pipe work and connections
- Pressure hoses
- Separator vessel maintenance, external, internal including liquids and solids removal
- Coalescing and particle filters
- Other electrical equipment including process instrumentation (level and flow transmitters, pressure transmitters), RTUs, electrical and solar panels, batteries
- Hazardous area inspections
- Chemical dosing system inspection and maintenance, and;
- Weed, grass, perimeter fence management maintenance
- ferrous pipe line cleaning
- Completion of all documentation as per site issued maintenance works, inclusive of maintenance repair checklist and maintenance repair reports
- Installation of rotatable or new equipment
- Commissioning of any rotatable or new equipment installed



# “Upstream Production Solutions – the complete package”

## OPERATIONS AND MAINTENANCE

Our ISO certified systems are recognised by national and regional regulators allowing us to act as the Nominated Operator on behalf of the asset owner.

- Field Development Planning and Management
- Facilities Operations and Maintenance
- Project Management
- Asset Integrity Management
- Inspection Services
- Facilities Engineering
- Drilling Management
- Vessel Audits and Expert Reviews
- Shutdown and Campaign Planning
- Logistics and Procurement
- Operator and Technical Training
- Life Extension



SAFETY	HEALTH	QUALITY	ENVIRONMENT
Planning →	Implementation →	Production →	End of Life
<ul style="list-style-type: none"> <li>Concept</li> <li>Operability &amp; Constructability</li> <li>Engineering &amp; Design Support</li> <li>Drilling &amp; Completions Management</li> <li>Maintenance Planning</li> </ul>	<ul style="list-style-type: none"> <li>Operating Philosophies</li> <li>Operations Readiness</li> <li>OPEX + Schedule Forecast</li> <li>Pre-Commissioning</li> <li>CBTA &amp; Training</li> <li>HAZOP/HAZID/Risk Assessment</li> <li>Safety Case Development</li> </ul>	<ul style="list-style-type: none"> <li>Contract Operations &amp; Maintenance</li> <li>Commissioning</li> <li>Maintenance Management</li> <li>RAMS/CMMS/RBI</li> <li>Asset Integrity Management</li> <li>Operator Training/Mentoring</li> <li>Logistics &amp; Procurement</li> </ul>	<ul style="list-style-type: none"> <li>Life Extension</li> <li>Care &amp; Maintenance</li> <li>Plugging &amp; Abandonment</li> <li>Remediation Management</li> <li>NORMs Management</li> </ul>
EXPERIENCE	TRACK RECORD	KNOWLEDGE-BASE	SYSTEMS



Customer Focus & Integrity | Safety & Environment | People & Community | Innovation & Quality

## WHY CHOOSE UPSTREAM PRODUCTION SOLUTIONS

**EXPERIENCED** - offshore, floating and onshore Nominated Facility Operator

**CAPABLE** - personnel, systems and processes geared for success

**INDEPENDENT** - not an asset owner or linked with any OEM / EPC company

**ALIGNED** - with our customer's goals

**RESPONSIVE** - quick to engage on changes to requirements

**INTEGRITY** - world class asset integrity and maintenance engineering systems

**FLEXIBLE** - operating, commercial and contract models

**TEAMWORK** - work in an integrated team environment with the customer

**DELIVER** - excellent track record delivering against KPI's, Budgets, Up time and HSE



[INFO@UPSTREAMPS.COM](mailto:INFO@UPSTREAMPS.COM)

© Copyright 2014 Upstream Production Solutions Pty Ltd is a wholly owned subsidiary of GR Engineering Services Ltd.

**BRISBANE**  
T. +61 7 3239 5800

**MELBOURNE**  
T. +61 3 8623 9800

**PERTH**  
T. +61 8 9482 0650

**KUALA LUMPUR**  
T. +60 3 2174 9200