



GR PRODUCTION SERVICES
OPERATIONS – MAINTENANCE – PROJECTS – ADVISORY

Maintenance Management Services

MAINTENANCE

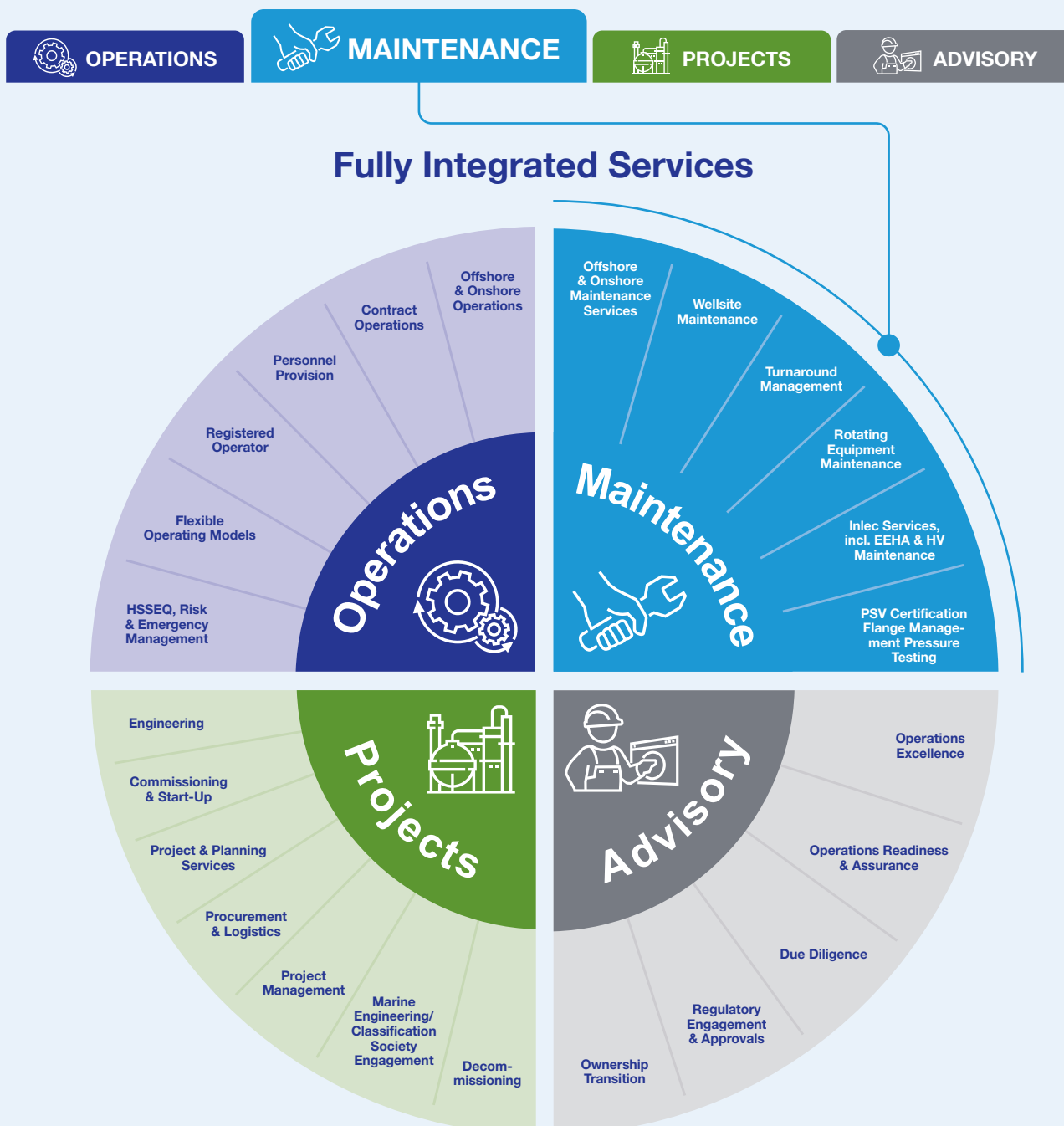


MAINTENANCE

GR Production Services is a leading provider of fully integrated, safe and sustainable production solutions to the energy and resources industries.

For nearly 30 years, GR Production Services has delivered value-added maintenance solutions, ensuring the safety and reliability of plant and equipment through customised support designed to optimise operational performance.

We provide preventative, rotating equipment, shutdown, specialist and safety critical maintenance services for our clients. Our skilled maintenance engineers and technical service personnel support asset lifecycle requirements from design, FEED and commissioning through to decommissioning and transition, with asset integrity, production assurance and technical support services available throughout.



Culture, capability and continuous improvements.



Our clients benefit from our range of Pressure Safety Valve (PSV) certification and maintenance capability services. We maintain over 5,000 well sites, 20 production facilities and more than 25,000 PSV's nationally. We combine our commitment to safety, innovation, quality and risk management with our highly specialised expertise and strong track record of providing reliable, on time, on budget results to our loyal client base.

Our range of maintenance services include:

- Onshore & Offshore Maintenance Services
- Wellsite Maintenance
- Turnaround Management
- Rotating Equipment Maintenance
- Inlec incl EEHA & HV
- PSV Certification, Flange Mgmt and Pressure Testing

Delivery Excellence Framework

Target: Operate and Maintain asset at technical, organisational and commercial optimum; **'The best you can be'**.





Principal Offshore & Onshore Maintenance Services



Origin Energy APLNG

(2013 - 2024)

Client

Origin Energy

Summary

Delivery of efficient maintenance modification repairs to multiple gas production and water treatment facilities. Servicing over 2000 wells across four operational sites. Continually improving on productivity targets and reduced well down-time.

Key Services

- Project Management, planning and execution of TAR 15 gas production trains, including gas processing facilities, water gathering systems, water treatment and pre-treatment facilities
- NATA accredited PSV servicing, HA Inspections, Insulation-Blasting and Coatings
- Waste Management and high-pressure cleaning



Santos - Brownfields Construction and Maintenance

(2022 - ongoing)

Client

Santos

Summary

GPRS manage a variety of routine maintenance and project work in the Cooper Basin Upstream fields.

We execute base business maintenance activities, provide support to scale up and down for specific campaigns and coordinate additional resources for set periods of time to execute dedicated work scopes as a rolling campaign.

GPPS maintenance engineers/technical service personnel provide preventative, rotating equipment, shutdown, specialist and safety critical maintenance services.

Field-based teams and service fleet cater for the remote Cooper Basin and manage all oil, spares and consumables to increase efficiency and reduce downtime.



ENEOS - MCH Demonstration Plant Facility

(2022 - ongoing)

Client

ENEOS

Summary

ENEOS Corporation constructed a demonstration plant in Brisbane, to produce methylcyclohexane (MCH), a type of hydrogen carrier, using its proprietary low-cost "electrochemical synthesis of organic hydride" method. The demonstration plant is designed to produce green MCH by combining the medium-sized electrolyzer with a 250-kilowatt solar power system which is ideal for solar power generation.

GRPS were engaged by ENEOS to operate and maintain their Green Hydrogen Pilot Plant at Bulwer Island, Brisbane. The project used world first technology developed by ENEOS Corporation, Chiyoda Corporation and Queensland University of Technology (never used outside of Japan) to produce green hydrogen.

Maintenance Management Services Track Record



Client, Project, Location	2016	2017	2018	2019	2020	2021	2022	2023	2024	2025
Origin, APLNG, QLD	✓	✓	✓	✓	✓	✓	✓	✓		
Santos GLNG, QLD	✓	✓	✓	✓	✓	✓	✓	✓	✓	✓
Santos Moomba, SA							✓	✓	✓	✓
APA Group, Orbest Gas Plant, VIC			✓	✓	✓	✓				
Arrow Energy, QLD			✓	✓	✓	✓	✓	✓	✓	✓
AWE Perth Basin, WA	✓	✓	✓	✓	✓	✓	✓	✓		
Central Petroleum, QLD/NT					✓	✓	✓	✓	✓	✓
Clarke Energy									✓	✓
ENEOS, QLD							✓	✓	✓	✓
ENI Blacktip, NT		✓	✓	✓	✓	✓	✓	✓	✓	✓
Jemena Gas, Metering Stations, QLD						✓	✓	✓		
MEPAU Xyris and Waitsia, WA								✓	✓	✓
Northern Endeavour, WA	✓	✓	✓	✓	✓	✓	✓			
QGC QCLNG, QLD	✓	✓	✓							✓
QPME								✓	✓	✓
Senex, QLD						✓	✓	✓	✓	✓
Sun Metals, QLD							✓	✓		
Triangle Energy, WA	✓	✓	✓	✓	✓	✓	✓	✓		
Vintage Energy, QLD/SA								✓	✓	✓
Westside, QLD						✓	✓	✓	✓	✓





Locations

